



# MICROSCOPE

Large-area, Multi-modal, High Spectral and Spatial Resolution

## Hyperspectral Scanning Solution



The ClydeHSI Hyperspectral Microscope is a unique, multi-modal capable instrument that can be configured to permit light and dark field microscopy, reflection, transmission, luminescence, polarisation and Raman microscopy studies

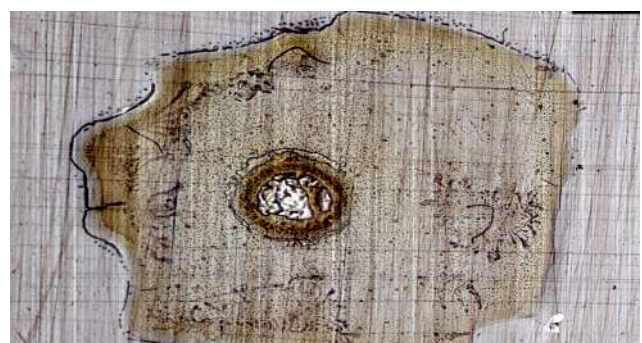
The system offers a high degree of applicational versatility and ultra-high precision. With spatial resolution capabilities of  $\leq 1 \mu\text{m}$ , the system is ideal for applications with colour and materials identification needs such as forensic trace evidence identification and analysis and medical applications.

Multiple motorised stage sizes available with fully automatic scanning of entire area. Automatic mosaicking of multi-strip acquisitions.

The system also has a motorised nosepiece and auto sample loading capabilities (pictured) for ultimate user functionality.

### Key Features:

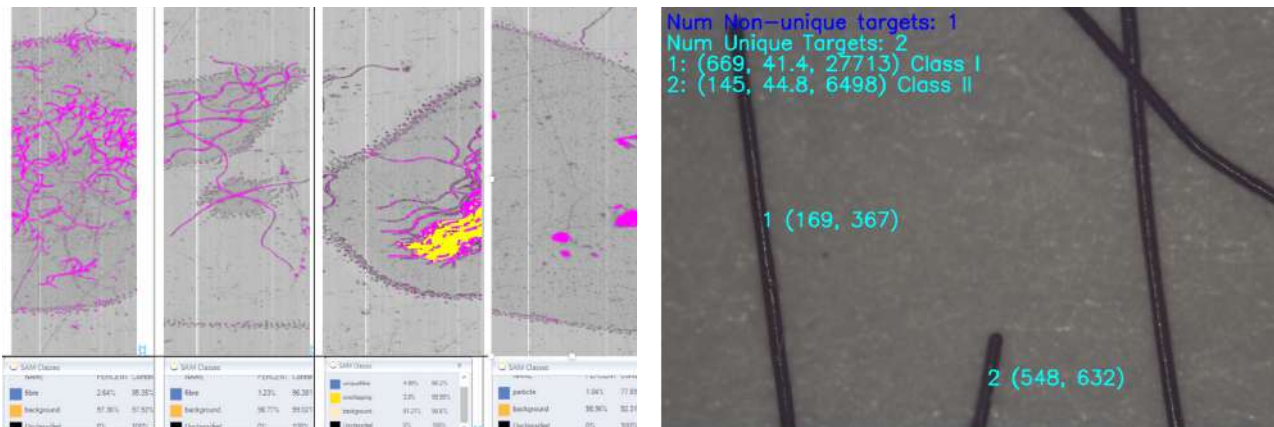
- <math>1 \mu\text{m}</math> Spatial Resolution
- Automatic Robotic Sample Loader
- Multi-modal Imaging Capability
- Auto-focus of Spectral Cameras
- Auto-exposure Setting
- Auto-square-pixel Facility
- Simultaneous Dual Camera Acquisition



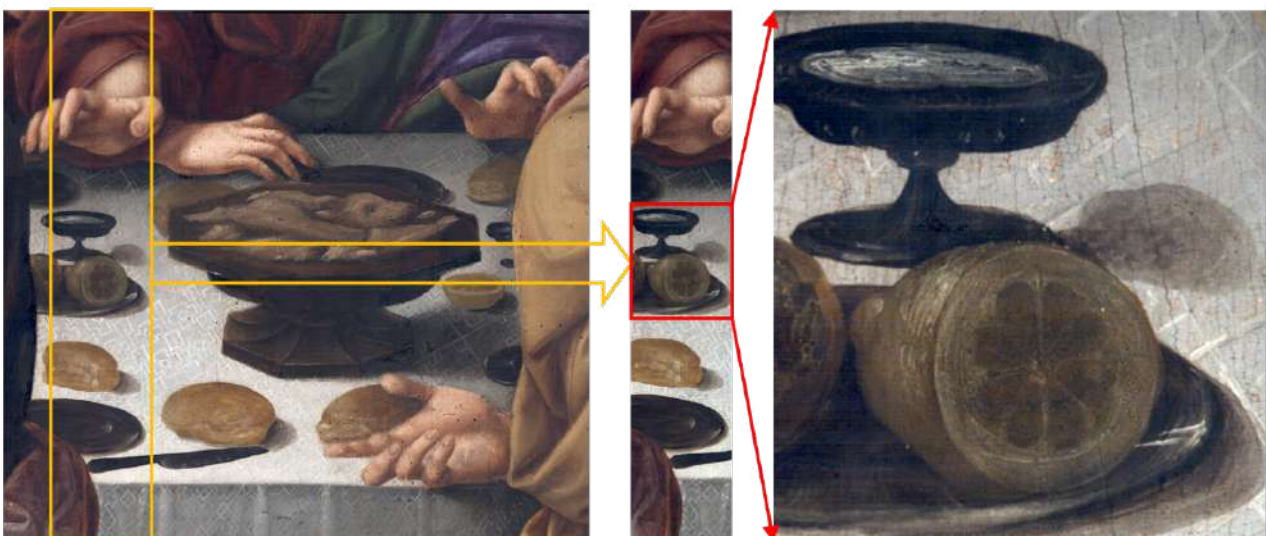
### Scanning Stage Technical Specifications

Parameter	Value	Units	Comment
Operational Modes	Reflectance, Transmission, Luminescence, Raman, Polarisation		Multi-modal operation with spectral correction and multi-strip mosaic imaging for large area high resolution scans
Spectral Range	400 to 1700	nm	Broad spectral range, ideal for colour and materials identification needs
Spatial Resolution	≤1	µm	Interchangeable objectives using motorised nosepiece
Spatial Range	Options for 75 x 50 mm to 300 x 300 mm	mm	Large area, highly stabilised, motorised platform
Stage Repeatability	≤1	µm	
Max Sample Area	300 x 300	mm <sup>2</sup>	Depends upon stage
Optional Auto-loader Sample Capacity	6		Robotic arm loads samples into sample area automatically

### Application Examples



Forensic Trace Evidence Analysis



Analysis of Cultural Heritage